

POLY 600

POLYMER-MODIFIED UNSANDED GROUT



POLY 600 meets or exceeds standard norm*:

ANSI
- ANSI A118.6
* See lexicon at the end.

DESCRIPTION

POLY 600 is an unsanded grout made of hydraulic cement, graded aggregates, dry chemicals and polymers. It is used for joints 1/16" (1.5 mm) to 1/8" (3 mm) wide. POLY 600 unsanded grout is prepared by simply adding water or additive. Formulated for grouting natural stone, slate, granite, most types of ceramic, ceramic mosaics, quarry tiles, brick pavers, as well as porcelain and clay tiles.

CHARACTERISTICS

- Polymer-fortified.
- Easy to install and clean.
- Consistent and accurate grout colours.
- Available in 30 different colours.
- Non-sagging formula.

FORMATS

- 2.2 kg (5 lbs) box – 12 per box
- 4.5 kg (10 lbs) box – 4 per box
- 11.33 kg (25 lbs) bag – 90 per skid

TECHNICAL DATA AT 22°C

Pot life	1 hour
Initial set	12 hours
Final set	28 days
VOC level	0 g/L

COVERAGE CHART KILOGRAMS REQUIRED

Dimensions	Surface	1/16" (1,5mm)	1/8" (3 mm)
1" X 1" X 1/4"	100 ff ²	10	18
2" X 2" X 1/4"	100 ff ²	5.5	10
4" X 4" X 1/4"	100 ff ²	3	5
4" X 4" X 3/8"	100 ff ²	4	8
6" X 6" X 1/4"	100 ff ²	2	3.5
6" X 6" X 3/8"	100 ff ²	3	3.5
8" X 8" X 1/4"	100 ff ²	2	3
8" X 8" X 3/8"	100 ff ²	2	4
10" X 10" X 1/4"	100 ff ²	1.5	2.2
10" X 10" X 3/8"	100 ff ²	1.6	3.5
12" X 12" X 1/4"	100 ff ²	1	2
12" X 12" X 3/8"	100 ff ²	1.5	3
13" X 13" X 1/4"	100 ff ²	1	2
13" X 13" X 3/8"	100 ff ²	1.5	2.5
16" X 16" X 1/4"	100 ff ²	1	1.5
16" X 16" X 3/8"	100 ff ²	1	2
18" X 18" X 1/4"	100 ff ²	1	1.5
18" X 18" X 3/8"	100 ff ²	1	2

SHELF LIFE

24 months following production date. Must be stored in a dry and heated area.

TECHNICAL NOTES

- Do not use POLY 600 for grouting joints wider than 1/8" (3 mm); use POLY 500 sanded grout instead.
- Certain natural stones (e.g. slate, marble, limestone, etc.) must be sealed before grouting.
- Make sure that the marble, granite or tiles are compatible for use with coloured grouts. Review the tile or marble manufacturer's literature and test the grout on a separate sample area before grouting to determine the product's suitability for coloured grouts.
- External factors may affect the colour shading of the grout, including joint width, the quantity and quality of water used for mixing and clean up, temperature and humidity, and cleaning methods. Because such factors are beyond the control of PROFIX, consistent shading of the grout cannot be guaranteed.
- The temperature should be maintained minimally at 10°C for 28 days to allow the cement to reach its final and complete cure, and therefore, all its strength.
- For indoor use only
- Do not use in submerged areas (pools, hot tubs or fountains)
- Do not use where chemicals and stain resistance is required. Instead, use POLY 800 PRECISION water-based epoxy.

INSTRUCTIONS

UNDERLAYMENT

The underlayment is the most important step for a long lasting result. Refer to the "Good supports" technical bulletin on our website. The underlayment must meet TTMAC and TCA standards.

SUBSTRATE PREPARATION



Before grouting, wait until the mortar or adhesive under the tiles is completely dry as per the manufacturer's recommendations. Joints must be clean and free of dust. Make sure that at least 2/3 of the height of the joints is mortar free so that the grout can properly adhere within the joints.

MIX



Before starting, it is suggested to blend the mixture while dry to standardize the product. As you may know, the iron oxides contained in the grout are what gives it a particular colour. The large number of tiny particles scattered throughout the mixture gives the illusion of opaqueness. Therefore, if an area is cleaned twice and another area five times, there is a strong likelihood that

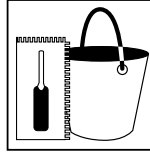
the colours will not be uniform. For this reason, it is important to carefully manage your work to ensure that the joints are uniformly installed and washed.

In a clean container, pour the water and gradually add the powder. Mix slowly and thoroughly to obtain a thick and creamy consistency. Let sit for five minutes and mix again (you may use a blender - 300 rpm). If after some time the mix becomes harder to work with, mix it again, but do not add any more water. Avoid remixing too often as it reduces the life of the grout. Instead, mix smaller quantities at a time.

It is possible to replace water with OCTANE 2.0 additive to increase the grout's stain resistance, flexibility and strength. POLY 600 and OCTANE 2.0 are ideal for exterior installations.

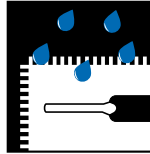
Ratio: Approximately 1.64 L of water or additive per 4.5 kg of POLY 600 (powder/water : 3 for 1)

APPLICATION



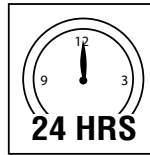
Use a rubber float and apply a firm pressure to completely fill the joints with grout. Remove excess grout on tiles also using a rubber float.

CLEANING



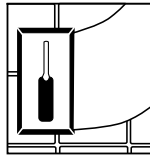
When the joints are thoroughly filled with grout, wait approximately 10 minutes before cleaning the surface. In a crosswise motion, wipe tiles with a damp sponge. Rinse your sponge and change the water often. Avoid spilling too much water on the tile surface as efflorescence may occur. The grout should come off easily. Do not rub excessively because it will empty your joints and decolorize your grout. Keep in mind that working consistently will ensure colour consistency. Promptly clean tools with water while material is still fresh.

CURING



Avoid any circulation for 24 hours. Avoid washing the floor and the wall for 72 hours. If a residue remains on your tiles 24 hours after installation, use a dry cloth to wipe it off. If you experience cleaning difficulties after the first 24 hours, use POLYKLEEN CRETE to remove any remaining residue (see POLYKLEEN CRETE technical data sheet before using).

MAINTENANCE



For additional protection, it is highly recommended to seal your grout with AQUAPEARL or MICROPEL sealers 14 days after installation. Your porous tiles can also be sealed with MICROPEL. See your retailer for more information.

WARRANTY

This product is guaranteed for 1 year when used according to La Margna Inc., TTMAC and TCA instructions. An extension of this warranty is available. For more information, visit our website.

LEED



Leadership in Energy & Environmental Design (LEED) is a green building rating system that plans, develops, compares and certifies sustainable buildings around the planet. The Canada Green Building Council certifies the project in terms of total points obtained after verifications and an examination of the documentation submitted by the design and construction teams. Ceraflex can help to achieve the following credits.

INDOOR ENVIRONMENTAL QUALITY:

IEQ Credit 3.2 option 3 - Reduce indoor air quality problems

IEQ Credit 4.1 - Low Emitting Materials

IEQ Credit 4.3 - Low Emitting Materials - Flooring systems

MATERIALS AND RESOURCES:

MR Credit 5.1 - 10% extracted and manufactured regionally

MR Credit 5.2 - 20% extracted and manufactured regionally

MR Credit 4.1 - 7.5% of recycled content

MR Credit 4.2 - 15% of recycled content

Refer to the PROFIX website for letters of certification.

CAUTION



This product contains cement and silica that can irritate skin and eyes. Avoid prolonged contact with skin. In case of contact with eyes, rinse thoroughly with water.

HEALTH AND SAFETY

Refer to the MSDS on our website for handling recommendations.

TECHNICAL SUPPORT

For questions, please contact our customer service PROFIX toll free: 1-800-463-6850 or info@profixsystems.com.

PROFIX is a registered trademark.

LA MARGNA INC.

412, Saint-Sacrement, Quebec (Quebec) G1N 3Y3 CANADA

T (418) 688-8286

F (418) 688-2070

www.profixsystems.com

LEXICON

POT LIFE

Maximum time the product can stay in the pail and remain usable. After this time, the product will be difficult to use and start to dry, making your work more difficult and the product much less effective.

INITIAL SET

Minimum time recommended before allowing light circulation (e.g. the weight of one person) over the surface. Before that time, no circulation should be allowed.

FINAL SET

Product's final set time.

ANSI

Latex-Portland Cement Grout (ANSI A118.7-1999): A grout made with Portland cement, carbonate calcium, a water retention agent and mixed with a latex additive. May be supplied with a dry, redispersable latex additive in the packaged premixed grout in which case the product may be referred to as a polymer-modified grout. Latex additives reduce the water absorption of grouts, improve stain resistance and increase the bond strength to ceramic tile. Normally dry cured for 24 hours. Damp curing may be required under some conditions.

LIABILITY

Before using, the user shall determine the suitability of this product for its intended use and the user alone shall assume all risks and liabilities in connection therewith. La Margna Inc. shall not accept any liability for any damage, loss or prejudice resulting from the direct or indirect use of our product in non-compliance to our specifications. • April 1, 2016