

UNIPATCH

PATCHING MORTAR

PROFIX



Description

UNIPATCH is a fast-setting, hydraulic cement and polymer resin-based interior floor-patching compound to caulk and fill cracks and irregularities in concrete and exterior grade plywood. UNIPATCH is used to level exterior concrete, sidewalks, parking areas and wood underlayments in preparation for installation of vinyl, linoleum, wood parquet, ceramic tile, slate, marble, and stone flooring.

Can be mixed with UNIPATCH PLUS to provide better adhesion and performance.

Characteristics

- Fast setting
- Solid support
- Easy to use, smooth consistency and non-granular

Formats

4.5 kg (10 lbs) – 4 per box

11.33 kg (25 lbs) – 108 per skid



Technical data @ 22°C

Pot life	10 minutes
Initial set	20 minutes
Final set	60-90 minutes
Compression force	1000 psi (7 days) 3000 psi (28 days)
Colour	Grey
Coverage	- 54 ft ² / 11kg @ 1/16" thickness - 27 ft ² / 11kg @ 1/8" thickness - 13.5 ft ² / 11kg @ 1/4" thickness
VOC level	0 g/L

* Usage requirements are approximate. Coverage will depend on the trowel used and the condition of your subfloor.

Shelf life

UNIPATCH: 12 months following production date (stored in a dry and heated area). Moisture will reduce the shelf life of the product.

Recommended substrates

Test on a small surface first to ensure suitability of coverings.

Cured concrete (28 days)

Exterior grade plywood

Masonry blocks and bricks (as described by TTMAC and TCA)

Technical notes

- Expansion joints: do not cover the joints with patching mortar.
- Applies from featheredge up to 12mm (1/2"). For installations thicker than 1/2", 2 applications are required. (First coat must be completely dry before applying the second one.)
- Do not use to level large surfaces (use NIVEX or FLEX 24).

- Avoid excessive heat and drafts during hardening period.
- Do not apply any adhesive or floor covering before UNIPATCH is completely dry.
- Apply in thin coats up to 6 mm (1/4") thick.
- Avoid trapping air or over mixing, which decreases the product's pot life.
- Do not use in submerged areas (pools, hot tubs or fountains).

Instructions

Underlayment

The underlayment is the most important step for a long lasting result. Refer to the "Good supports" technical bulletin on our website. The underlayment must meet TTMAC and TCA standards.

Substrate preparation



All backing surfaces must be structurally sound, dry and free of any deleterious substances (wax, sealer, etc.), which may act as bond barriers (in accordance with industry standards outlined by the TTMAC and the TCA).

Mix



Use a clean mixing container. Mix 1 part liquid with 3 parts UNIPATCH. Pour the liquid first and gradually add UNIPATCH powder while mixing. Water or UNIPATCH PLUS latex must be at room temperature. If used in small quantities, make sure that the dry powder in the bag is well mixed.

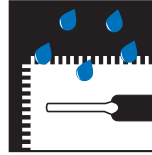
Avoid over mixing, which will reduce the product's pot life. Mix until you obtain a smooth, lump-free, creamy consistency. Do not mix more material than can be applied in 8-10 minutes. Do not let sit; spread onto the floor surface immediately after mixing.

Application



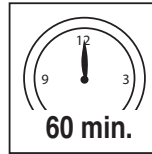
Spread with a flat steel trowel to the desired finish.

Cleaning



Promptly clean tools and hands with water while mortar is fresh and before it sets.

Curing



Let cure at least 60 minutes.

Maintenance

No particular maintenance is required, given the nature of the product.

Limitations

- Indoor application only.
- Do not use at temperatures below 10°C (50°F) or above 35°C (95°F).
- Do not use over pressed wood, particle board, masonite, lauan or asbestos board, or other similar materials. Do not use on hardwood floors or metal.
- Do not use to resurface concrete that will remain exposed without floor coverings (UNIPATCH must absolutely be covered).
- Do not apply directly over a gypsum-based underlayment.

Warranty

The product is guaranteed for a period of 5 years for an indoor installation. In this case, the warranty can be extended to 10 years if you meet certain conditions. See «Warranty» on the website for more details.

LEED



Leadership in Energy & Environmental Design (LEED) is a green building rating system that plans, develops, compares and certifies sustainable buildings around the planet. The Canada Green Building Council certifies the project in terms of total points obtained after verifications and an examination of the documentation submitted by the design and construction teams. UNIPATCH can help to achieve the following credits:

PROFIX

Tile and Stone Installation Systems

UNIPATCH

Patching mortar

Indoor Environmental Quality:

IEQ Credit 3.2 option 3 - Reduce indoor air quality problems
IEQ Credit 4.1 - Low Emitting Materials

Materials and Resources:

MR Credit 5.1 - 10% extracted and manufactured regionally
MR Credit 5.2 - 20% extracted and manufactured regionally

Refer to the PROFIX website for letters of certification.

Caution



This product contains cement and silica that can irritate skin and eyes. Avoid prolonged contact with skin. In case of contact with eyes, rinse thoroughly with water.

Health and Safety

Refer to the MSDS on our website for handling recommendations.

Technical support

Questions? Call the PROFIX customer care team toll-free at: 1-800-463-6850 or e-mail us at: info@profixsystems.com

PROFIX is a registered trademark.

La Margna Inc.
412, St-Sacrement Québec, Québec
G1N 3Y3 CANADA
Tel.: (418) 688-8286
Fax: (418) 688-2070

www.profixsystems.com

Lexicon

Pot life: Maximum time the product can stay in the pail and remain usable. After this time, the product will be difficult to use and start to dry, making your work more difficult and the product much less effective.

Open time: Maximum time you have to install your tiles once the mortar has been applied to the subfloor. After this time, a film will appear over the surface of the mortar and progressively reduce its grip. It is therefore recommended NOT to install tiles on mortar that has been applied for longer than the maximum time indicated.

Initial set: Minimum time recommended before allowing light circulation (e.g. the weight of one person) over the surface. Before that time, no circulation should be allowed.

Final set: Product's final set time.

Liability

Before using, the user shall determine the suitability of this product for its intended use and the user alone shall assume all risks and liabilities in connection therewith. La Margna Inc. shall not accept any liability for any damage, loss or prejudice resulting from the direct or indirect use of our product in non-compliance to our specifications.

May 18th, 2010