

OPTIFLEX

MORTAR FOR LARGE TILES INSTALLATION



OPTIFLEX meets or exceeds standard norm*:

CGSB
- CGSB 71-GP-30M, Type 2

ANSI
- ANSI A118.4
- ANSI A118.11
* See lexicon at the end.

DESCRIPTION

OPTIFLEX is a high performance polymer-modified thin-set mortar with integral contact, developed especially for wide tile installation on floors. By using the right trowel, it may as well be used to install the followings: most ceramic, porcelain, marble, granite, slate and mosaic tiles. This superior quality product may be applied on the following surfaces: concrete, cement, exterior grade plywood in dry areas. It can also be applied over vinyl (except for cushioned ones), ceramic or porcelain tiles with the prope surface preparation.

CHARACTERISTICS

- Ideal for horizontal large format tile installation
- Polymer-fortified
- Superior shear bond strength
- Excellent grip for porcelain tiles
- Easy to mix (add water only)
- Easy to apply
- Smooth creamy formula
- Can be used indoors and outdoors

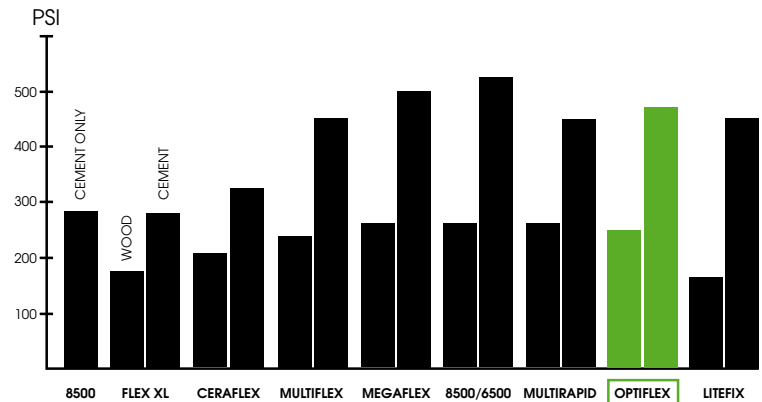
FORMATS

- 22.7 kg (50 lbs) bag – 49 per skid

TECHNICAL DATA AT 22°C

Pot life	2 hours
Open time	30 minutes
Initial set	24 hours
Final set	28 days
Shear strength:	
- Tile over plywood	240 psi (28 days)
- Tile over tile (porcelain)	450 psi (28 days)
VOC level	0 g/L
Colours	Grey and White

SHEAR STRENGTH COMPARATIVE CHART

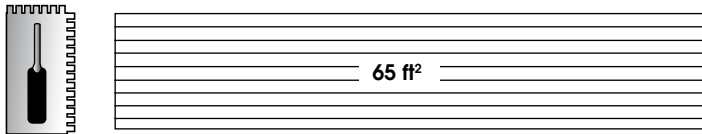


Which size of notched trowel should I use for my tile or stone installation? Interior applications of tile should achieve a minimum coverage of 80% and exterior applications a minimum of 95%. Back buttering the tile and stone will help achieve a greater percentage of coverage.

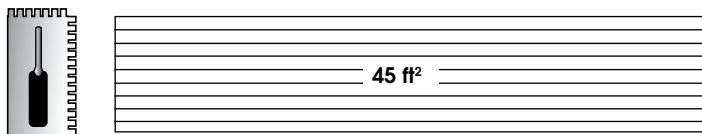
A 22.7 KG BAG COVERS:

COVERAGE*

1/4 X 3/8 - For tiles up to 16" X 16" (400 mm X 400 mm)



1/2 X 1/2 - For tiles greater than 16" X 16" (400 mm X 400 mm)



* Usage requirements are approximate. Coverage will depend on the trowel used and the condition of the subfloor.

SHELF LIFE

12 months following production date. Must be stored in a dry and heated area.

RECOMMENDED SUBSTRATES

Test on a small surface first to ensure suitability of coverings.

- Cured concrete (28 days)
- Masonry blocks
- Existing bricks
- Gypsum wallboard (primed only with latex)
- Cement backer-board
- Exterior grade plywood (interior dry areas only)
- Terrazzo floors*
- Vinyl non-cushioned flooring*
- Existing unglazed floor tiles*
- Old cutback adhesives*

* See "technical notes" section.

TECHNICAL NOTES

- Avoid any circulation for 24 hours.
- Expansion joints: do not cover the joints with mortar.
- Ideally, adhesive residues and vinyl tiles must be removed from the surface, which must then be cleaned of all residues. Although the mortar will bond to adhesive residues and non-cushioned vinyl tiles, it is unknown for how long. The results can therefore not be guaranteed.
- Use white mortar when installing white marble or light coloured stones.
- Some natural stones require specific methods of installation. Verify with your retailer.
- For outdoor installations, use OPTIFLEX in areas that are sheltered from bad weather. For other outdoor installations, use MEGAFLEX or 8500/6500.
- Do not use in submerged areas (pools, hot tubs or fountains).

- When installing over existing tiles, you must first make sure that these are properly fixed in place. Second, you must ensure that they are sufficiently porous. To do so, it is recommended to scrape the surface and apply a primer (PX PRIMER) or use MEGAPRIME 700 before proceeding with the installation.

- Very large tiles installation may require an extended initial set. We suggest 48 hours.

INSTRUCTIONS

UNDERLAYMENT

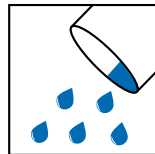
The underlayment is the most important step for a long lasting result. Refer to the "Good supports" technical bulletin on our website. The underlayment must meet the TTMAC and TCA standards.

SUBSTRATE PREPARATION



All backing surfaces must be structurally sound, dry and free of any deleterious substances (wax, sealer, etc.) which may act as bond barriers (according to industry standards as outlined by the TTMAC and the TCA).

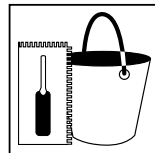
MIX



In a clean container, add OPTIFLEX to water. Mix slowly to obtain an homogeneous and smooth consistency. Let sit for 10 minutes and remix. If using a mixer, use a low speed one to ensure that no air is trapped in the mix. Do not add more water or powder. Some hardening may occur before all material is used. If so, simply remix by hand; do not add any liquid.

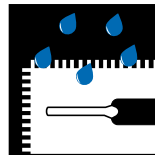
Ratio: Approximately 5 L of water per 22.7 kg of powder (powder/water : 3 for 1)

APPLICATION



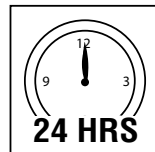
Use recommended notched trowel with enough depth (1/2" x 1/2") to ensure sufficient contact between the mortar and the back of the tile. Using the flat edge of the trowel, apply a thin coat of mortar and, using the notched side, immediately add another thin coat of mortar. Do not use more mortar than can be spread in 20 minutes. All trowels should be square-notched and not "V" or rounded type. Place tiles firmly into position in a slight twisting motion before skinning occurs. Immediately align and adjust tiles after installation.

CLEANING



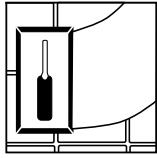
Promptly clean tools with water while material is fresh.

CURING



Let cure at least 24 hours before grouting at 22°C. Be advised that the lower the temperature is, the longer the drying time will be. Never try to accelerate drying time. Light circulation is allowed after 24 hours, only for grouting. A minimum of 48 hours is necessary before replacing furniture and supplies. Heavy circulation is allowed after 7 days. After 28 days, the cure will be complete.

MAINTENANCE



No particular maintenance is required given the nature of this product.

For grouting, use POLY 600 unsanded grout, POLY 500 sanded grout or POLY 800 PRECISION epoxy, stain resistant grout.

LIMITATIONS

- The temperature should be maintained minimally at 10°C for 28 days to allow the cement to reach its final and complete cure, and therefore, all its strength.
- Do not use over pressed wood, particle board, masonite, lauan or asbestos board, or other similar materials. Do not use on hardwood floors.

WARRANTY

The product is guaranteed for a period of 5 years for an indoor installation and 3 years for outdoor installation. If the product is used on a heating cable, it is guaranteed for a period of 5 years. In the case of an indoor installation, the warranty can be extended to 10 years if you meet certain conditions. See "Warranty" on the website for more details.

LEED



Leadership in Energy & Environmental Design (LEED) is a green building rating system that plans, develops, compares and certifies sustainable buildings around the planet. The Canada Green Building Council certifies the project in terms of total points obtained after verifications and an examination of the documentation submitted by the design and construction teams. Ceraflex can help to achieve the following credits.

INDOOR ENVIRONMENTAL QUALITY:

- IEQ Credit 3.2 option 3 - Reduce indoor air quality problems
- IEQ Credit 4.1 - Low Emitting Materials
- IEQ Credit 4.3 - Low Emitting Materials - Flooring systems

MATERIALS AND RESOURCES:

- MR Credit 5.1 - 10% extracted and manufactured regionally
- MR Credit 5.2 - 20% extracted and manufactured regionally
- MR Credit 4.1 - 7.5% of recycled content
- MR Credit 4.2 - 15% of recycled content

Refer to the PROFIX website for letters of certifications.

CAUTION



This product contains cement and silica that can irritate skin and eyes. Avoid prolonged contact with skin. In case of contact with eyes, rinse thoroughly with water.

HEALTH AND SAFETY

Refer to the MSDS on our website for handling recommendations.

TECHNICAL SUPPORT

For questions, please contact our customer service PROFIX toll free: 1-800-463-6850 or info@profixsystems.com.

PROFIX is a registered trademark.

LA MARGNA INC.

412, Saint-Sacrement, Quebec (Quebec) G1N 3Y3 CANADA

T (418) 688-8286

F (418) 688-2070

www.profixsystems.com

LEXICON

POT LIFE

Maximum time the product can stay in the pail and remain usable. After this time, the product will be difficult to use and start to dry, making your work more difficult and the product much less effective.

OPEN TIME

Maximum time you have to install your tiles once the mortar has been applied to the subfloor. After this time, a film will appear over the surface of the mortar and progressively reduce its grip. It is therefore recommended NOT to install tiles on mortar that has been applied for longer than the maximum time indicated.

INITIAL SET

Minimum time recommended before allowing light circulation (e.g. the weight of one person) over the surface. Before that time, no circulation should be allowed.

FINAL SET

Product's final set time.

SHEAR STRENGTH

Mortar strength in psi.

DRAFT ISO 13007 (TO COME)

ISO 13007 is essentially a combination of European, British and American ceramic tile adhesive Standards.

ADHESIVE TYPE SYMBOLS

C Means it is a cementitious adhesive containing cement, aggregates and organic additives. The adhesive needs to be mixed with water or a liquid admix just before use.

D Means it is a dispersion adhesive. Dispersion means it is a pre-mixed, ready to use adhesive made from water based polymer with organic additives and mineral fillers.

R Means it is a reaction resin adhesive containing synthetic resin, mineral fillers and organic additives. The adhesive cures by chemical reaction.

ADHESIVE PERFORMANCE SYMBOLS

1

Means the adhesive has passed the minimum pass level tests that are mandatory for that adhesive type.

2

Means the adhesive has passed the same tests as in 1 and/or other applicable tests, but a higher pass levels.

F

Means the adhesive has met the requirements for a fast setting adhesive.

T

Means the adhesive has met the requirements for a slip resistant adhesive

E

Means the adhesive has met the requirements for extended open time.

ANSI

Latex-Portland Cement Mortar (ANSI A118.4-1999): A single component mix incorporating a redispersible dry latex in a bag, generally referred to as «Polymer Modified Mortar», generally recommended for moderate, light and residential use. Some high-latex content polymer modified mortars may be suitable for heavier use.

Exterior Grade Plywood (EGP) Latex-Portland Cement Mortar (ANSI A118.11-2000): A modified Portland cement dry-set mortar to which a polymer has been incorporated in latex form or in a powder form for the bonding of tile to exterior grade plywood in interior dry or limited water exposure areas only. When added in latex form it is added as a replacement for part or all of the gauging water in accordance with the manufacturer's instructions.

CGSB

Meets or exceeds standard norm ONGC 71-GP-30 M type 2 of "Canadian General Standards Board".

LIABILITY

Before using, the user shall determine the suitability of this product for its intended use and the user alone shall assume all risks and liabilities in connection therewith. La Margna Inc. shall not accept any liability for any damage, loss or prejudice resulting from the direct or indirect use of our product in non-compliance to our specifications. • April 1, 2012