

DESCRIPTION

NIVEX is a fast setting Portland cement and polymer based self-levelling for interior floor. When mixed with water, it becomes a fluid material that will seek its own level, producing a smooth level surface with excellent durability. NIVEX can be used and gives an excellent adhesion over new concrete* or exterior grade plywood* although any primer has been used. For any other circumstance, a primer (PX primer) is required.

* See technical data sheet for more details

CHARACTERISTICS

- Extremely fluid
- Each coat can be applied up to 24 mm (1") thickness
- Fast setting
- Component of PROTHERM warranty system
- Polymer fortified
- Easy to use

TECHNICAL DATA @ 22 C

Pot life	10 minutes
Initial set	2-4 hours
Final set	12 hours
Compression force	2000 psi (7 days) 4000 psi (28 days)
Colour	Gray
Coverage	22.67 kg cover 25 sq-ft @ 1/4 thickness

FORMATS

22.67kg (50 lbs) bag - 49 per skid

TILE AND STONE INSTALLATION SYSTEMS

- Self-levelling
- Thinset mortar
- Adhesive
- Cement grout
- Water-based epoxy grout
- Waterproofing
- Acoustic adhesive
- Sealers
- Cleaners
- Strippers
- Colorants



PROFIX

Manufactured by La Margna Inc.
412, avenue St-Sacrement
Québec (Qc)
G1N 3Y3

Tel: 418-688-8286, toll free 1-800-463-6850
Fax: 418-688-2070, toll free 1-800-419-4819
www.profixsystems.com

PROFIX

How to use self levelling



PROFIX COMMITMENT



La Margna Inc., as the exclusive manufacturer of PROFIX tile and stone installation products and PROTHERM radiant floor systems, is committed to offering you superior quality products that meet or surpass industry standards which are established by the "Terrazzo, Tile & Marble Association of Canada" (TTMAC) and by the "Tile Council of North America" (TCA).

Using strict quality control standards in our production, we ensure that you get the very best products for the best results possible. Furthermore, thanks to our research & development laboratory and a qualified research team, La Margna inc. is constantly refining its technology to offer the best performance at the best price.

All PROFIX products are guaranteed to offer optimum performance when they are used during installations that conform to the standards established by the TTMAC, TCA and La Margna.

La Margna inc. stands by its products and offers excellent technical support for your projects, with complete products specifications and installation techniques. No matter the size of your project, whether you are an architect, store owner or contractor, the PROFIX team is available for you. So don't hesitate to contact our PROFIX technical support service. Trust PROFIX products for excellent long lasting results.

We thank you for choosing PROFIX quality products for your next project.

HOW TO APPLY NIVEX?

A self-levelling mortar is used to level a surface. The mix will seek his own level and dries in 2 hours.



Step 1

In a clean bucket, add 22.67KG of NIVEX to 5,7L of water. To optimise the chemical reaction, it is always better to add the powder to the water and to mix. Ratios have to respect to obtain a creamy texture and the optimal performances.



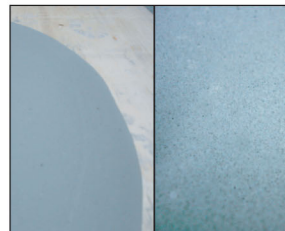
Step 2

Mix until you get a homogeneous and creamy lump-free mix. It is suggested to be two to ease the mix. Do not mix the compound too fast to avoid air entrapment within the mix.



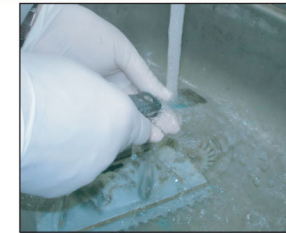
Step 3

Pour the fluid as soon as possible over the surface to be levelled and spread with a squeegee or finishing trowel. It is a self leveling underlayment, no smoothing is required. It is recommended to organize your work in a continuous way.



Step 4

From 2 to 4 hours are required before allowing light circulation on the self levelling. Keep in mind that temperature has an effect on the drying time. Once the self levelling is dry, your tile installation can begin with PROFIX thin set mortar.



Step 5

Clean your tools with water when the underlayment is still fresh.

2 HOURS LATER*...

You can walk on...



You can start your installation...



* @ 21°C (see technical data sheet for more details)